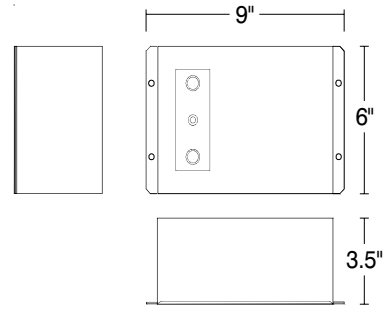




GTD20™

SWITCH BYPASS DEVICE

FOR GENERATOR-SUPPLIED OR CENTRAL
INVERTER SYSTEM-SUPPLIED LIGHTING



APPLICATION

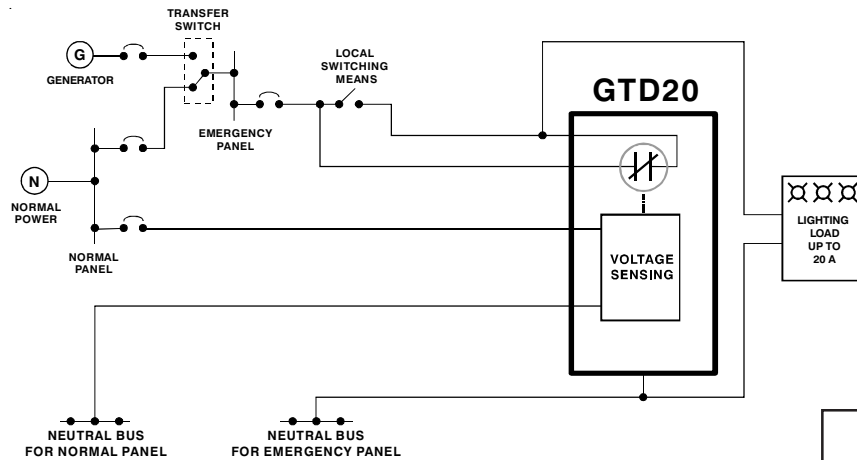
The GTD20 switch bypass device works in conjunction with an auxiliary generator or central inverter system to power designated emergency lighting loads for egress purposes regardless of local switch position. The device consists of relay switching circuitry in a single, wall-mountable enclosure. One switch bypass device can be used to bypass the local switching means, allowing the building's generator (or central inverter system) to bring on switchable lighting loads up to 20 amps. The switch bypass device is suitable for use in indoor or damp locations. **Recommended applications include:** auditoriums, classrooms or any other location with generator-supplied or central inverter system-supplied lighting.

OPERATION

The GTD20 switch bypass device senses the loss of normal power and bypasses the local switching means, connecting the lighting load directly to the unswitched, generator-supplied (or central inverter system-supplied) lighting circuit. No routine maintenance is required to keep the GTD20 functional; however, like other life safety unit equipment, it should be checked periodically to ensure that it is working properly.

INSTALLATION

The GTD20 switch bypass device does not affect normal fixture operation and comes fully assembled for immediate installation. **In addition to available wiring, the device requires a direct, unswitched connection to a normal power circuit (not backed up by a generator or central inverter).** See diagram below for typical installation.



The GTD20 can be used with 3-wire dimming systems. Contact the factory for details.

NORMAL OPERATION

LIGHTING LOAD CONTROLLED BY LOCAL SWITCHING MEANS.

GENERATOR OPERATION

LIGHTING LOAD IS INDEPENDENT OF LOCAL SWITCHING MEANS.

UL LISTED

The GTD20 has been tested by Underwriters Laboratories in accordance with the standards set forth in UL 924 as "Emergency Lighting Equipment" and is UL Listed for field installation.



SPECIFIERS REFERENCE

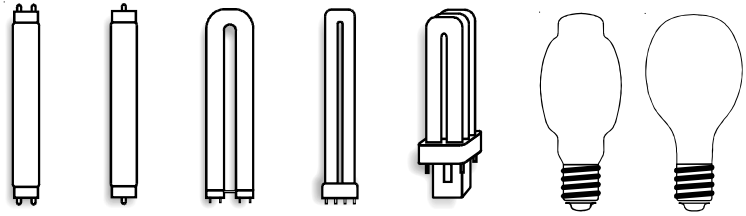
Project	Type	Model No.
Comments		



GTD20™

SWITCH BYPASS DEVICE

FOR GENERATOR-SUPPLIED OR CENTRAL
INVERTER SYSTEM-SUPPLIED LIGHTING



SPECIFICATION

Generator-supplied (or central inverter system-supplied) egress lighting shall be provided by using existing lighting loads equipped with a Bodine GTD20 switch bypass device. The device shall be capable of bypassing the local switching means when normal utility power has been lost. The device shall consist of relay switching circuitry, a test switch, a normal power indicator light and an emergency power indicator light contained in one 9" x 6" x 3.5" enclosure; shall sense normal power at 120 or 277 VAC, 60 Hz; shall be rated for 120 through 277 VAC, 50/60 Hz at up to 20 amps of lighting load; shall draw 280 mA and 3.5 Watts during normal sensing operation; and shall comply with the current NEC. The device shall be UL Listed for field installation in indoor or damp locations and shall be warranted for a full five years from date of purchase.

WARRANTY

The GTD20 switch bypass device is warranted for five (5) full years from date of purchase. This warranty covers only properly installed switch bypass devices used under normal conditions. For the warranty period, Bodine will, at its option, repair or replace without charge a defective device, provided it is returned to the factory transportation prepaid and our inspection determines it to be defective under terms of the warranty. Repair or replacement, as stated above, shall constitute the purchaser's exclusive warranty, which does not extend to transportation, installation, labor or any other charges; nor does it apply to any equipment of another manufacturer used in conjunction with the device.

PRODUCT SUMMARY

UL LISTED

Field Installation
(Indoor or Damp Locations)

Full Warranty

5 Years (NOT pro-rata)

Dual Input Voltage

120 or 277 VAC, 60 Hz
(sensing circuit only)

AC Input Current

280 mA (sensing circuit only)

AC Input Power Rating

3.5 Watts (sensing circuit only)

Approved Lighting Loads

Fluorescent
Incandescent
HID

Lighting Load Rating

20 A Maximum
120 through 277 VAC, 50/60 Hz

Temperature Rating (Ambient)

-20°C to +55°C
(-4°F to 131°F)

Dimensions

9" L x 6" W x 3.5" H
(229 mm x 152 mm x 89 mm)
Mounting 8.5" x 2.5"
(216 mm x 63.5 mm)

Weight

4.5 lbs. (2.0 kg)

GTD20s can be modified to accommodate special voltages and frequencies.