

BSL17C/BSL17

Emergency LED Driver

PHILIPS bodine

A Division Of Philips Electronics North America Corporation

Up to 7.0 W emergency illumination with LEDs

Product Summary

UL RECOGNIZED/CSA CERTIFIED

Factory Installation only
(Indoor and Damp)

Illumination Time

90 Minutes

Full Warranty

5 Years (NOT pro-rata)

Dual Input Voltage

120/277 VAC, 60 Hz

AC Input Current

280 mA

AC Input Power Rating

3.0 W

Output Voltage

30.0 - 80.0 VDC

Output Current

200 mA (Maximum)

Output Power

7.0 W (Maximum),
measured at nominal battery voltage

Test Switch/Charging Indicator Light

Illuminated Test Switch

Battery

High-Temperature,
Maintenance-Free
Nickel-Cadmium Battery
7- to 10-Year Life Expectancy

Battery Charging Current

250 mA

Recharge Time

24 Hours

Temperature Rating (Ambient)

0°C to +50°C
(32°F to 122°F)

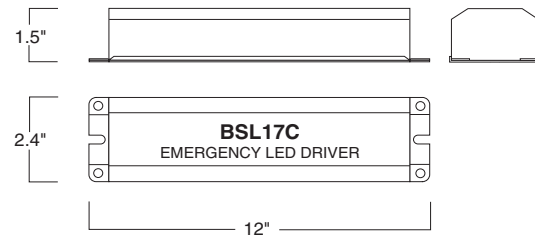
Dimensions

12.0" x 2.4" x 1.5"
(304 mm x 60 mm x 38 mm)
Mounting Center 11.5" (292 mm)

Weight

4.3 lbs. (1.95 kg)

Emergency LED drivers can be modified to accommodate special voltages and frequencies.



Application

The BSL17C/BSL17 emergency LED driver works in conjunction with an AC LED driver that has an output current not to exceed 1.5 A, convert new or existing LED fixtures into emergency lighting. The emergency driver consists of a high-temperature nickel-cadmium battery, charger and electronic circuitry in one compact red case. The BSL17C can be used with an LED lighting load of up to 7.0 Watts (measured at nominal battery voltage) at rated current range of up to 200 mA for 90 minutes. If used in an emergency-only fixture, no AC driver is necessary. The BSL17 is suitable for indoor and damp locations and for sealed & gasketed fixtures, including fixtures rated for wet locations. The BSL17C is suitable for indoor and damp locations. Neither the BSL17C nor the BSL17 is suitable for air handling heated air outlets and wet or hazardous locations. For more information about specific LED and AC driver compatibility, please call the factory.

Operation

When AC power fails, the BSL17C/BSL17 immediately switches to the emergency mode, operating the LEDs at a reduced lumen output for a minimum of 90 minutes. When AC power is restored, the emergency driver automatically returns to the charging mode.

Installation

The BSL17C/BSL17 does not affect normal fixture operation and may be used with either a switched or unswitched fixture. If a switched fixture is used, an unswitched hot lead must be connected to the emergency driver. The emergency driver must be fed from the same branch circuit as the AC driver. The BSL17 series may be installed inside (BSL17 only) or on top of (both) the fixture. Installation is not recommended with fixtures where the ambient temperature may fall below 0° C.

UL CSA AND CODE COMPLIANCE

The BSL17C/BSL17 has been tested by Underwriters Laboratories in accordance with the standards set forth in UL 924, "Emergency Lighting and Power Equipment," and by the Canadian Standards Association (CSA) in accordance with the standards set forth in C22.2 No. 141, "Unit Equipment for Emergency Lighting." The BSL17C/BSL17 is UL Component Recognized and CSA Certified for factory installation only. Emergency illumination time exceeds the National Electrical Code (NEC), Life Safety Code (NFPA-LSC), National Building Code of Canada (NBC), National Fire Code of Canada (NFC) and UL 90-minute requirements.

Specifiers Reference

Project _____ Type _____ Model No. _____

Comments _____

L2300004

09/22/11 © Philips Emergency Lighting
P.O. Box 460 Collierville, TN USA 38027-0460
Sales 800-223-5728 FAX 901-853-5009
Tech. Support 888-263-4638
www.philips.com/bodine

BSL17C/BSL17

Emergency LED Driver

Up to 7.0 W emergency illumination with LEDs

Emergency Illumination

The BSL17C/BSL17 operates an LED load of up to 7.0 W at nominal battery voltage at a maximum rated current of 200 mA for a minimum of 90 minutes.

Specification

Emergency lighting shall be provided by using a LED fixture equipped with a Philips Bodine BSL17C/BSL17 emergency driver. This emergency driver shall consist of a high-temperature, maintenance-free nickel-cadmium battery, charger and electronic circuitry contained in one 12" x 2 3/8" x 1 1/2" red metal case. The BSL17C comes with 2' length(s) of flexible conduit. (The BSL17 does not have conduit.) An illuminated test switch (ITS) to monitor charger and battery and installation hardware shall be provided. The emergency driver shall be capable of operating an LED load of up to 7.0 Watts at a maximum rated current (200 mA) for a minimum of 90 minutes. It is suitable for indoor and damp locations and for sealed & gasketed fixtures (BSL17 only). The BSL17C/BSL17 shall have 3 Watts of input power and a 19.2 Watt-hour battery capacity and shall comply with emergency standards set forth by the current NEC. The emergency driver shall be UL Recognized for factory installation only and shall be warranted for a full five years from date of purchase.

Installation Options and Ordering Codes

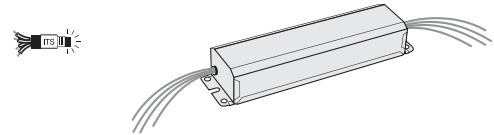
The BSL17C/BSL17 can be ordered in several mounting configurations and with different test switch/LED options. Please see the Ordering Codes at right to determine which configuration best meet your requirements.

Warranty

Model BSL17C/BSL17 is warranted for five (5) full years from date of purchase. This warranty covers only properly installed Philips Bodine emergency LED drivers used under normal conditions. For the warranty period, Philips Emergency Lighting will, at its option, repair or replace without charge a defective emergency LED driver, provided it is returned to the factory transportation prepaid and our inspection determines it to be defective under terms of the warranty. Repair or replacement, as stated above, shall constitute the purchaser's exclusive warranty, which does not extend to transportation, installation, labor or any other charges; nor does it apply to any equipment of another manufacturer used in conjunction with the emergency driver.

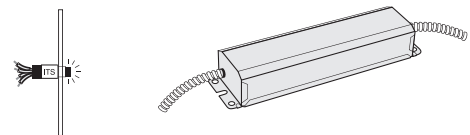
BSL17

Includes Loose ITS Parts Kit



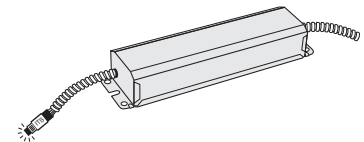
BSL17C Type 1

Includes ITS on Wall Plate



BSL17C Type 1 Option 6

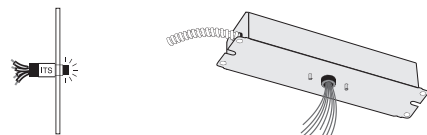
Includes ITS



ITS exits unit through conduit. All other wires through the other conduit.

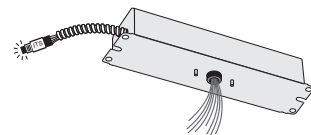
BSL17C Type 2

Includes ITS on Wall Plate



BSL17C Type 2 Option 6

Includes ITS



ITS exits unit through conduit. All other wires through lid. Studs are threaded so unit can be mounted on a J-box plate.

L2300004

09/22/11 © Philips Emergency Lighting
P.O. Box 460 Collierville, TN USA 38027-0460
Sales 800-223-5728 FAX 901-853-5009
Tech. Support 888-263-4638
www.philips.com/bodine

For the most current technical information and notices, please visit TechNotes on our website.