

# B50LP

EMERGENCY LIGHTING EQUIPMENT

# PHILIPS bodine

A Division Of Philips Electronics North America Corporation

**Specification grade;  
High lumen, low profile  
End-of-lamp-life compatible**

## Product Summary

### UL LISTED

Factory or Field Installation  
(Indoor and Damp)

### Illumination Time

90 Minutes

### Initial Light Output

750 - 1300 Lumens

### Full Warranty

5 Years (NOT pro-rata)

### Dual Input Voltage

120/277 VAC, 60 Hz

### AC Input Current

200 mA

### AC Input Power Rating

4.0 Watts

### Test Switch

Single Pole

### Battery

High-Temperature,  
Maintenance-Free  
Nickel-Cadmium Battery  
7- to 10-Year Life Expectancy

### Battery Charging Current

180 mA

### Recharge Time

24 Hours

### Charging Indicator Light

LED

### Temperature Rating (Ambient)

0°C to +50°C  
(32°F to 122°F)

### Dimensions

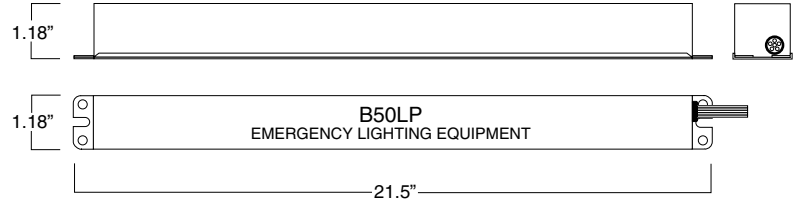
21.5" x 1.18" x 1.18"  
(546 mm x 30 mm x 30 mm)  
Mounting Center 21.1" (536 mm)

### Weight

3.3 lbs. (1.5 kg)

### Product Features

High-Lumen Output,  
Low-Profile Design for Ballast  
Channel Installation in Space-Limited  
Fixtures.



## APPLICATION

The B50LP low-profile emergency ballast works in conjunction with a low-profile or standard-size AC ballast to convert new or existing fluorescent fixtures into unobtrusive emergency lighting. The emergency ballast consists of a high-temperature nickel-cadmium battery, charger and electronic circuitry in one compact case. The B50LP can be used with most 17 - 215 W (2' - 8') T8, T9, T10 or T12 fluorescent lamps without integral starters, including U-shaped, HO, VHO, circline and energy-saving, and (4-pin) rapid-start long compact fluorescent lamps. One- or two-lamp operation may be selected (see Table 1). It is also compatible with most one-, two-, three- and four-lamp electronic, standard, energy-saving and dimming AC ballasts. If used in an emergency-only fixture, no AC ballast is necessary. The B50LP is suitable for indoor and damp locations and for sealed & gasketed fixtures, including fixtures rated for wet locations. It is not suitable for air handling heated air outlets or wet or hazardous locations. For information about specific lamp and ballast compatibility, please contact the factory. Recommended applications include: emergency lighting for pendant, cove, recessed indirect/direct, surface-mount and architectural lighting commonly used in office, hospitality, health care, retail and educational facilities.

## OPERATION

When AC power fails, the B50LP automatically switches to emergency power, operating one or two lamps at a reduced lumen output for a minimum of 90 minutes. When AC power is restored, the emergency ballast returns to the charging mode and, using a patented circuit, delays AC ballast operation for approximately three seconds to prevent false tripping of the AC ballast end-of-lamp-life shutdown circuits.

## INSTALLATION

The B50LP does not affect normal fixture operation and may be used with either a switched or unswitched fixture. If a switched fixture is used, an unswitched hot lead must be connected to the emergency ballast. The emergency ballast must be fed from the same branch circuit as the AC ballast. The B50LP may be installed inside, on top of or remote from the fixture. The emergency ballast may be remotely installed up to half the distance the AC ballast manufacturer recommends removing the AC ballast from the lamp or up to 50 feet, whichever is less. Installation is not recommended with fixtures where the ambient temperature may fall below 0°C.

## UL AND CODE COMPLIANCE

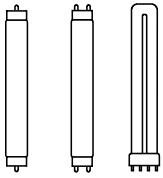
The B50LP has been tested by Underwriters Laboratories in accordance with the standards set forth in UL 924, "Emergency Lighting and Power Equipment," and is UL Listed for factory or field installation. Emergency illumination time exceeds the National Electrical Code (NEC), Life Safety Code (NFPA-LSC) and UL 90-minute requirements.

## Specifiers Reference

Project \_\_\_\_\_ Type \_\_\_\_\_ Model No. \_\_\_\_\_  
Comments \_\_\_\_\_

L2000060

06/13/11 © Philips Emergency Lighting  
P.O. Box 460 Collierville, TN USA 38027-0460  
Sales 800-223-5728 FAX 901-853-5009  
Tech. Support 888-263-4638  
www.philips.com/bodine



# B50LP

## EMERGENCY LIGHTING EQUIPMENT

**Specification grade;  
High lumen, low profile  
End-of-lamp-life compatible**

### EMERGENCY ILLUMINATION

Depending on the number (one or two), wattage and type of lamps selected, the B50LP produces 750 to 1300 lumens initial emergency light output (see Table 2). If two-lamp operation is selected, light output is evenly divided between the lamps for better distribution of emergency illumination.

### SPECIFICATION

Emergency lighting shall be provided by using a standard fluorescent fixture equipped with a Philips Bodine B50LP low-profile emergency ballast. The B50LP consists of a high-temperature, maintenance-free nickel-cadmium battery, charger and electronic circuitry contained in one 21.5" x 1.18" x 1.18" galvanized steel case. A solid-state charging indicator light to monitor the charger and battery, a single-pole test switch and installation hardware shall be provided. The emergency ballast, using a patented circuit, shall delay AC ballast operation for approximately three seconds to prevent false tripping of AC ballast end-of-lamp-life shutdown circuits. The emergency ballast shall be capable of operating [one or two] \_\_\_\_\_ fluorescent lamp(s) (see Table 1) at \_\_\_\_\_ lumens (see Table 2) initial light output in the emergency mode for a minimum of 90 minutes. It shall be suitable for indoor and damp locations and for sealed & gasketed fixtures, including fixtures rated for wet locations. The B50LP shall have 4 Watts of input power and a 21.0 Watt-hour battery capacity and shall exceed emergency standards set forth by the current NEC. The emergency ballast shall be UL Listed for installation inside, on top of or remote from the fixture and shall be warranted for a full five years from date of purchase.

### WARRANTY

Model B50LP is warranted for five (5) full years from date of purchase. This warranty covers only properly installed Philips Bodine emergency ballast used under normal conditions. For the warranty period, Philips Emergency Lighting will, at its option, repair or replace without charge a defective emergency ballast, provided it is returned to the factory transportation prepaid and our inspection determines it to be defective under terms of the warranty. Repair or replacement, as stated above, shall constitute the purchaser's exclusive warranty, which does not extend to transportation, installation, labor or any other charges; nor does it apply to any equipment of another manufacturer used in conjunction with the emergency ballast.

Table 1 - Lamp Compatibility

LAMP	BASE	WATTAGE (Length)	NO. of LAMPS (EMERGENCY)
T8, T9, T10, T12	Single or Bipin	17 - 40 W (2' - 4')	1
		17 - 215 W (2' - 8')	2
Long Compact	4-PIN (2G11)	18 - 39 W	1
			2
		18 - 55 W	1

Table 2 - Initial Lumen Output

LAMP	LUMENS	
	1 Lamp	2 Lamps
FO25, FBO24 T8	950	900
FO32, FBO31 T8	1050	950
FO96, T8	1050	
F017, FB016 T8	800	750
F40T12, F40/U	850	900
F48T12/HO	900	
F96T12, HO, VHO	850	
F39/36BX, PL-L 36 W, DULUX L 39 W	900	850
F40 T12 ES (34 W)	750	750
PL-L 50 W, DULUX L 55 W	1300	
PL-L 40 W, F40/30BX, F50BX	1300	

L2000060

06/13/11 © Philips Emergency Lighting  
P.O. Box 460 Collierville, TN USA 38027-0460  
Sales 800-223-5728 FAX 901-853-5009  
Tech. Support 888-263-4638  
www.philips.com/bodine

*For the most current technical information and notices, please visit TechNotes on our website.*