

Installation Instructions

Remote Control Testing Module



! IMPORTANT SAFEGUARDS !

WHEN USING ELECTRICAL EQUIPMENT, BASIC SAFETY PRECAUTIONS SHOULD ALWAYS BE FOLLOWED, INCLUDING THE FOLLOWING:

READ AND FOLLOW ALL SAFETY INSTRUCTIONS

1. This product is for use with Bodine Fluorescent Emergency Ballasts only. Make sure all connections are in accordance with the National Electrical Code and any local regulations.
2. To reduce the risk of electric shock, disconnect all power sources (including emergency ballast battery connector) before servicing.
3. This product is for factory or field installation.
4. This product is for use with indoor or damp location fixtures **EXCEPT** air handling heated air outlets and wet or hazardous locations.
5. An unswitched AC power source is required (120 or 277 VAC, 60Hz).
6. The use of accessory equipment not recommended by the manufacturer may cause an unsafe condition.
7. Do not use this product for other than intended use.
8. Servicing should be performed by qualified service personnel.

SAVE THESE INSTRUCTIONS



CAUTION: THIS UNIT HAS MORE THAN ONE POWER SUPPLY CONNECTION POINT. TO REDUCE THE RISK OF ELECTRIC SHOCK, DISCONNECT ALL POWER SOURCES BEFORE INSTALLING OR SERVICING THIS UNIT.

! SERVICE BY QUALIFIED PERSONNEL ONLY !

04/16/11

© Philips Emergency Lighting

A Division of Philips Electronics North America Corporation

INSTALLATION

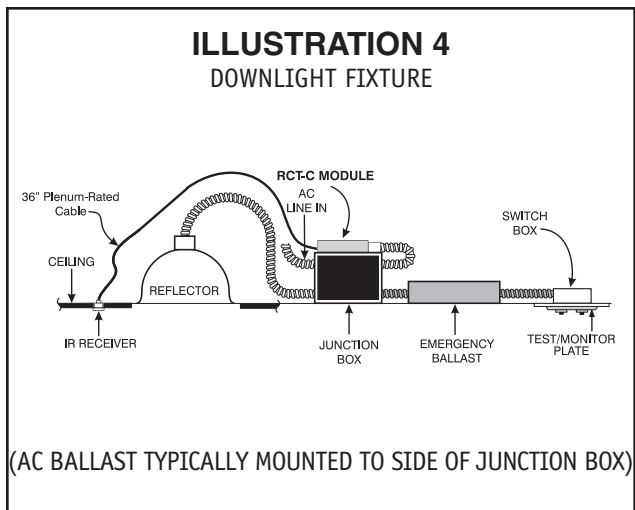
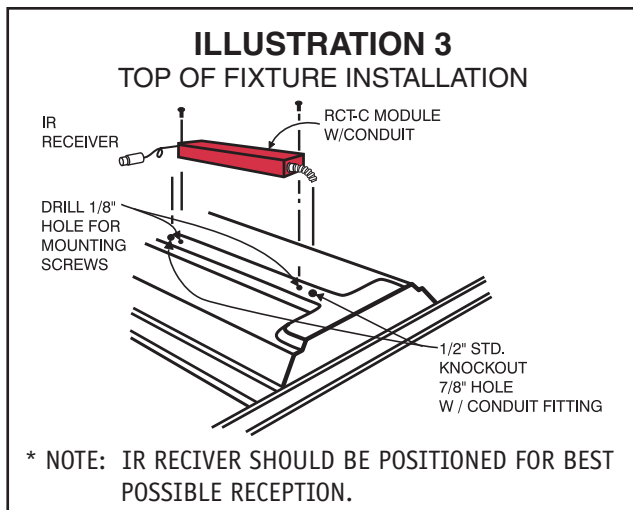
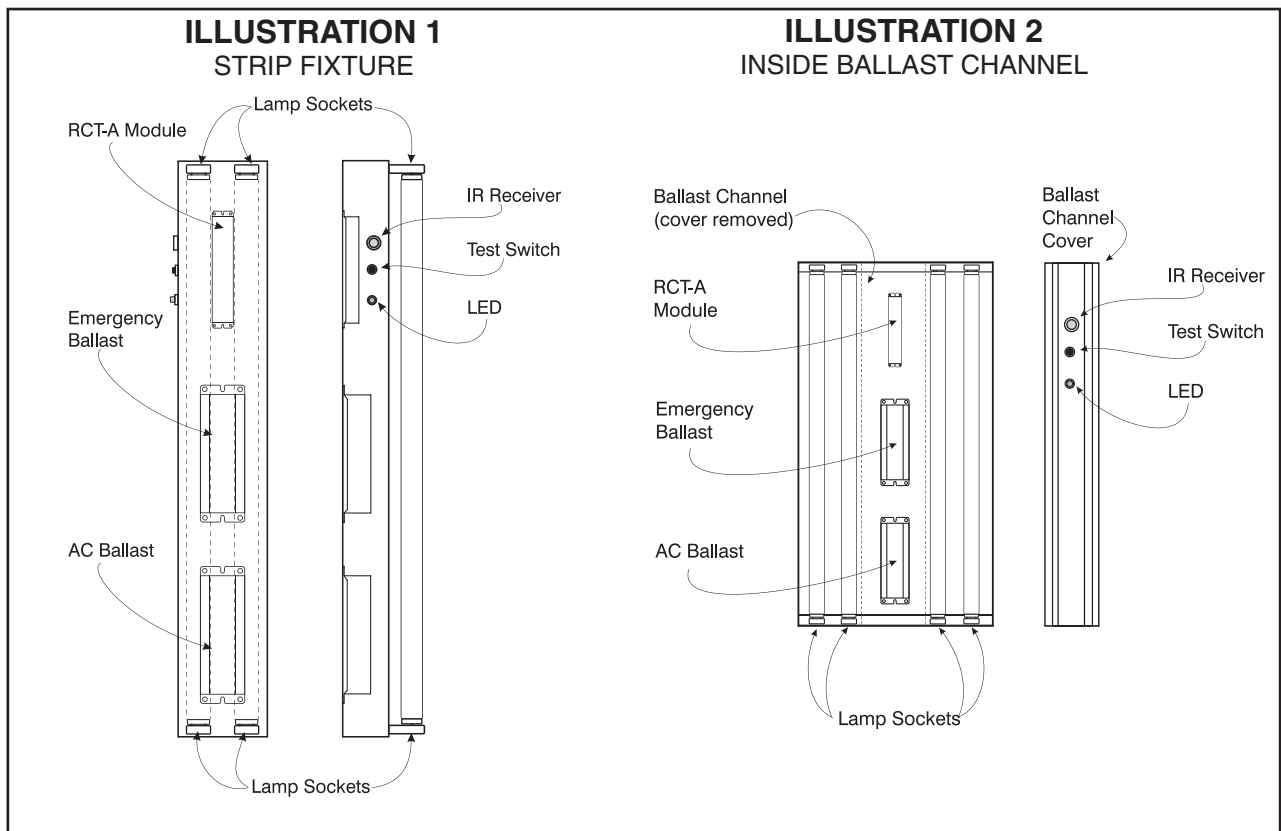


WARNING: TO REDUCE THE RISK OF ELECTRIC SHOCK, DISCONNECT ALL POWER SOURCES BEFORE INSTALLING OR SERVICING THIS UNIT.

NOTE: BEFORE INSTALLING THE REMOTE CONTROL TESTING MODULE, Make sure that the necessary branch circuit **WIRING** is available. An unswitched source of normal power is required. THE REMOTE CONTROL TESTING MODULE MUST BE FED FROM THE SAME BRANCH CIRCUIT as the emergency and ac BALLAST.

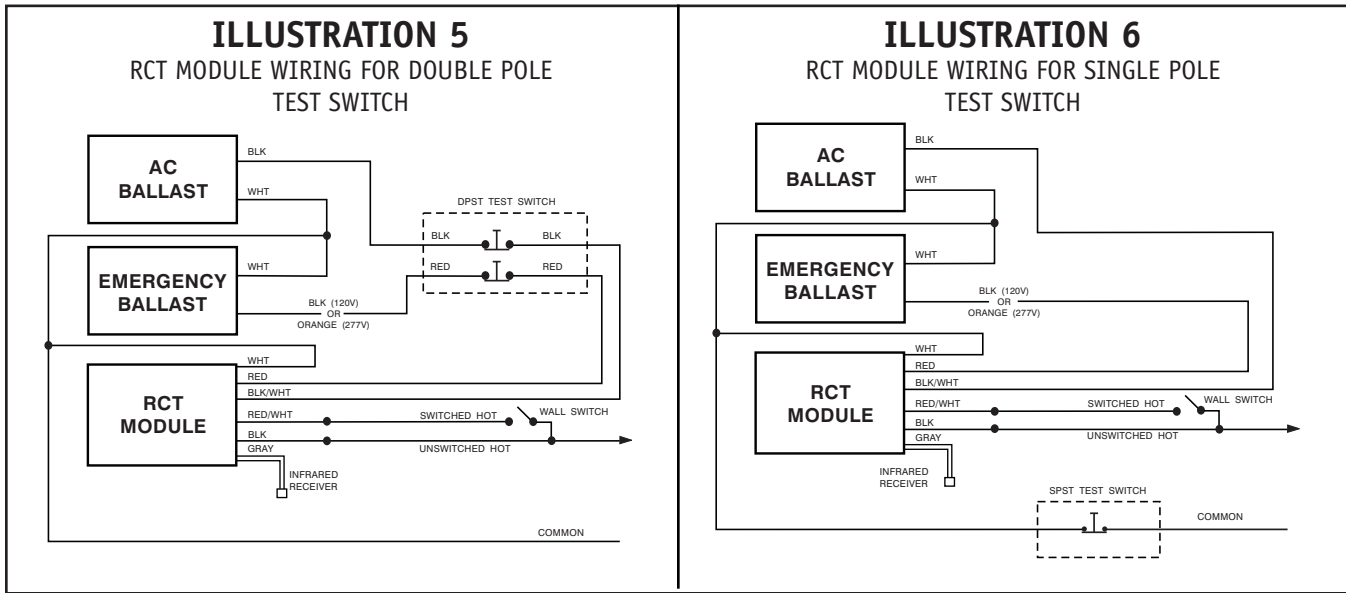
STEP #1 INSTALLING THE RCT MODULE

- > FAMILIARIZE YOURSELF WITH THESE INSTRUCTIONS BEFORE BEGINNING INSTALLATION.
- > Disconnect AC power from the fixture. Remove the ballast channel cover and disconnect battery connector on Bodine emergency ballast. Install the remote control testing module in the ballast channel (RCT-A) or on top of fixture (RCT-C) See Illustrations 1, 2, 3, or 4).

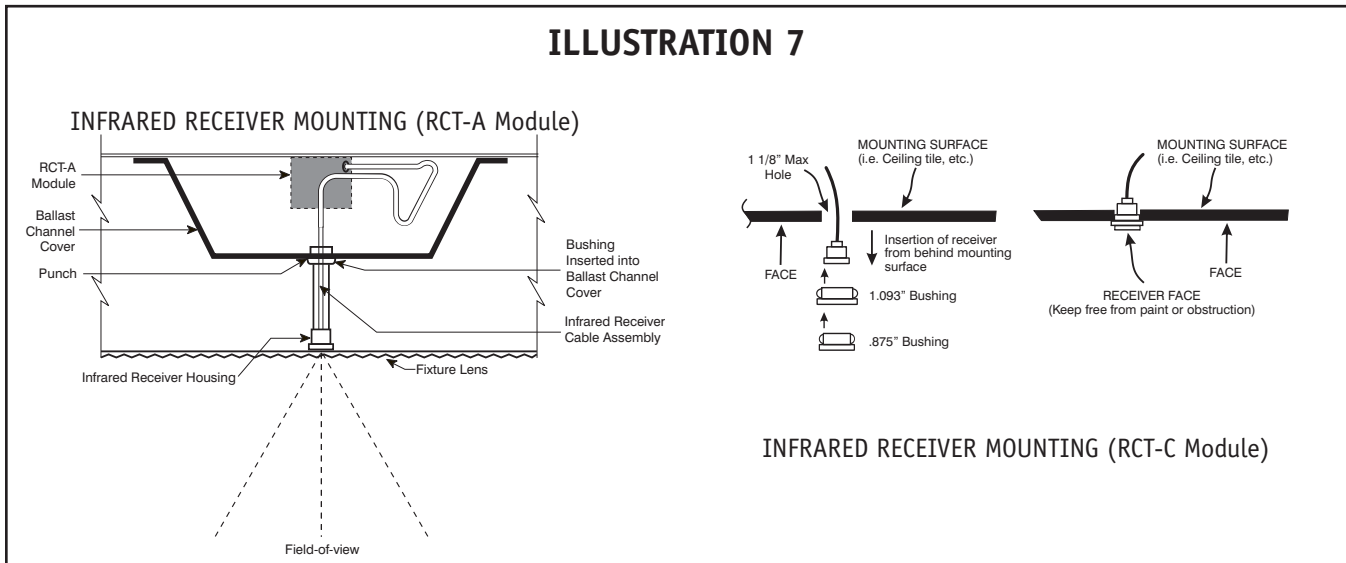


INSTALLATION

STEP #2 > Wire RCT Module so it will remove AC power from both the AC ballast and the emergency ballast at the same time (see Illustration 5 or 6 depending on test switch type - double pole or single pole).



STEP #3 > Refer to Illustration 7 and install the infrared receiver and cable assembly as shown. On a lensed fixture, the infrared receiver should be adjusted so that it mates flush to the inside of the fixture lens. The infrared receiver should be installed to allow line-of-sight access with the handheld remote control unit (Bodine Model WHRCT sold separately).



STEP #4 > After installation is complete, apply AC power to the fixture and reconnect the battery connector on the emergency ballast.

OPERATION

The RCT Module uses internal relay contacts to control the AC power supplies that feed the AC ballast and the Bodine emergency ballast. When activated, the relay contacts open, simulating a power failure to both the AC ballast and the emergency ballast.

IMPORTANT NOTE: A handheld remote control transmitter must be used to activate the RCT Module (Bodine Model WHRCT - sold separately).

MAINTENANCE

No routine maintenance is required to keep the RCT Module functional. However, it should be checked periodically to ensure that it is working properly.

REMOTE CONTROL TESTING

The RCT Module adds the remote control testing feature to fixtures equipped with a Bodine fluorescent emergency ballast. This allows the emergency ballast to be tested from a remote location. A handheld remote control unit (Bodine Model WHRCT sold separately) is required to use this feature. Testing of emergency ballast operation can still be accomplished by turning AC power off at the circuit breaker or by depressing the test switch.

Remote Control TESTING MODULE Operation: The WHRCT handheld remote control transmitter has three push-buttons: one for initiating a 30-second test, one for initiating a 90-minute test, and one to abort either test and Reset the emergency ballast to its “normal” charging mode. The push buttons are momentary action and do not need to be held down. The internal circuitry of the RCT Module controls the actual testing.

After installation is complete and AC power is supplied to the fixture, stand beneath the fixture to be tested and point the remote control at the infrared receiver. Press the 30-second test or 90-minute test button on the remote control transmitter. The RCT Module simulates a power outage causing the emergency ballast to run the lamp(s) from its internal battery for 30 seconds or 90 minutes (depending on test button depressed). (Note: the emergency ballast must charge for at least 24 hours before performing a 90-minute test).

To cancel a test at any time, point the remote control transmitter at the infrared receiver and press the Reset button. The RCT Module automatically restores the fixture to its operational state before the test.

Note: Use the handheld remote control transmitter near the fixture and within the receiver field-of-view (see Illustration 7).