

# B94 Ordering Codes

Philips Emergency Lighting

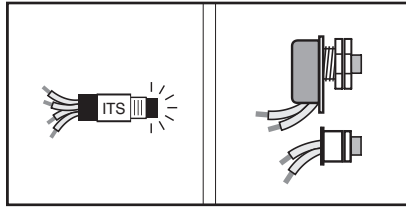
**PHILIPS**  
**bodine**

## B94GU Type 1 - Universal Input, no conduit

**Option 3**  
Loose ITS Parts Kit

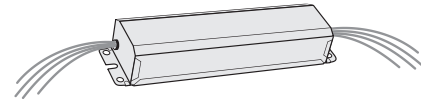
**Option 4**  
Loose Test Switch and  
LED Parts Kit

Test Switch  
and  
LED Kits



Item # **PDL94GU3M**

Item # **PDL94GU4M**

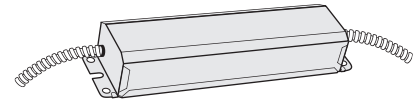
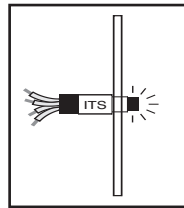


**Order Code:**  
B94GU Type 1  
Option \_\_\_\_\_  
Item # \_\_\_\_\_

## B94CGU Type 1 - Universal Input Voltage, with conduit

**Option 2**  
ITS on Wall Plate

Test Switch  
and  
LED Kit

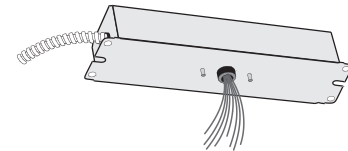
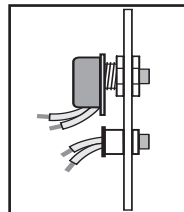


**Order Code:**  
B94CGU Type 1  
Option 2  
Item # **PDL94G20M**

## B94CGU Type 2 - Universal Input Voltage, with conduit, bottom mount

**Option 1**  
Test Switch and  
LED on Wall Plate

Test Switch  
and  
LED Kit

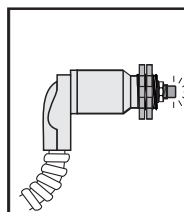


**Order Code:**  
B94CGU Type 2  
Option 1  
Item # **PDL94G59M**

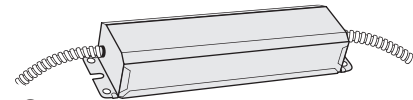
## Non-Universal Input Models with conduit (120/277V)

**Option 6B**  
ITS in Conduit Body

Test Switch  
and  
LED Kit



**B94CG TYPE 1**  
Option 6B - Item # **PDL94G50**



**B94CG TYPE 2**  
Option 6B - Item # **PDL94G39**

